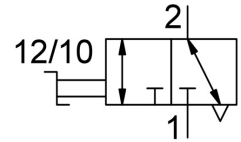
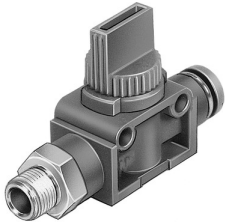


On off valve HE-3-1/2-QS-1/2-U

Part number: 153988

FESTO



Data sheet

Feature	Value
Type code	HE
Valve function	3/2, bistable
Selection of additional function	With exhaust function
Pneumatic connection 1	1/2 NPT
Pneumatic connection 2	QS-1/2
Actuation type	Manual
Type of mounting	Optionally: Direct mounting via through-hole Direct fastening via thread
Standard nominal flow rate	812.7 l/min
Nominal width	4.7 mm
Operating pressure	-0.095 MPa ... 1 MPa
Operating pressure	-0.95 bar ... 10 bar
Ambient temperature	0 °C ... 60 °C
Housing material	PBT-reinforced
Operating medium	Compressed air as per ISO 8573-1:2010 [7:-:-]
Exhaust air function	Without flow control option
Sealing principle	Soft
Mounting position	Any
Structural design	Piston gate valve
Type of control	Direct
Flow direction	Non-reversible
Symbol	00997329
Information on operating and pilot media	Operation with oil lubrication possible (required for further use)
Corrosion resistance class (CRC)	2 - Moderate corrosion stress
Temperature of medium	0 °C ... 60 °C
Product weight	87 g
Pneumatic connection 3	Not ducted
Material of screwed trunnion	Brass, nickel-plated
Note on materials	RoHS-compliant
Seals material	NBR